



SAN FRANCISCO  
HUMAN SERVICES AGENCY

# Benefits 101: Helping Community Providers Connect People to Services and Benefits

November 13, 2025



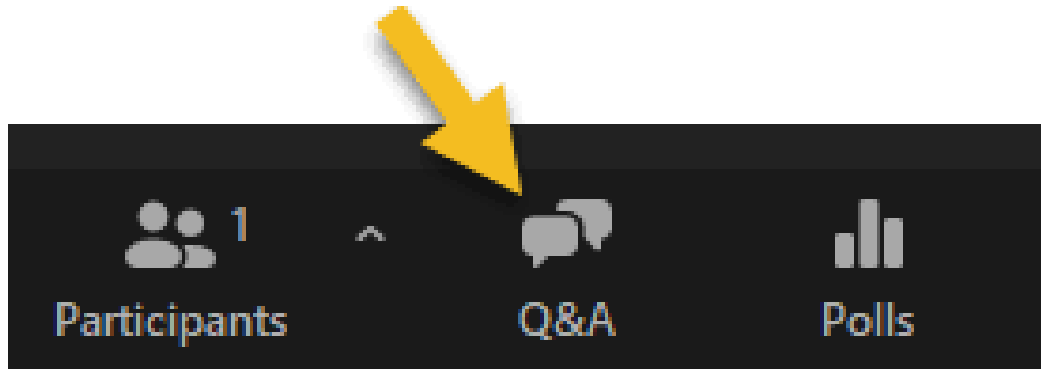
# To Connect to Zoom Interpretation

- On your computer, move your mouse so that the bar at the bottom of your screen appears. You'll find a small globe there. Click on it and select your preferred language.
- On your smartphone, tablet or iPad, touch your screen so that the options menu appears. Click on the three dots or MORE option and then select LANGUAGE INTERPRETATION, then press your preferred language and then click DONE.
- You should see the globe on your computer. If you joined from a smartphone, tablet or iPad, look for the interpretation function in the MORE section or in the three dots menu. Don't forget to press DONE once you select your preferred language.



# Q&A logistics

Please locate the Q&A button on your screen to submit your questions in your preferred language throughout the presentation.





SAN FRANCISCO  
HUMAN SERVICES AGENCY

# Kunal Modi

## Policy Chief, Health and Human Services for San Francisco





SAN FRANCISCO  
HUMAN SERVICES AGENCY

# Trent Rhorer

## Executive Director, San Francisco Human Services Agency





SAN FRANCISCO  
HUMAN SERVICES AGENCY

# We serve 1 in 4 people in San Francisco



## **San Francisco social safety net:**

Services, supports, and public benefits designed to meet the unique needs of low-income individuals, children, and families, older adults, and adults with disabilities.

# Agenda

## 1. SFHSA Overview

Phillip Mau, SFHSA, Program Director of Alignment and Guidance

## 2. Medi-Cal (+ Upcoming Changes Due to H.R.1)

Phillip Mau, SFHSA, Program Director of Alignment and Guidance

## 3. CalFresh (+ Upcoming Changes Due to H.R.1)

Phillip Mau, SFHSA, Program Director of Alignment and Guidance

## 4. Jobs + Money

Phillip Mau, SFHSA, Program Director of Alignment and Guidance

## 5. Legal Update on Immigrants and Public Benefits

Ariel Brown, Immigrant Legal Resource Center (ILRC), Senior Staff Attorney

## 6. Immigrant Resources in San Francisco

Richard Whipple, Office of Civic Engagement & Immigrant Affairs (OCEIA), Deputy Director

## 7. **Q&A**

Phillip Mau, SFHSA, Program Director of Alignment and Guidance



# Our Agency overview



**Our Mission:** SFHSA delivers essential services that support and protect people, families, and communities. We partner with neighborhood organizations and advocate for public policies to improve well-being and economic opportunity for all San Franciscans





# Programs and services



Health Care Coverage  
Medi-Cal



Nutrition  
CalFresh



Cash  
Assistance



Employment and  
Education



Child Welfare  
Adult Protective Services



Older Adults  
Adults with Disabilities





SAN FRANCISCO  
HUMAN SERVICES AGENCY

# Upcoming Medi-Cal Changes due to State and Federal (H.R.1) Policies

**Phillip Mau, SFHSA, Program Director of Alignment  
and Guidance**



# What is Medi-Cal

Medi-Cal is a public health insurance program that offers eligible individuals and families access to free or low-cost health care and dental coverage.

If you are not eligible for Medi-Cal, we can recommend other affordable health care options.

**Application timeline:** 45 days for SFHSA to review a Medi-Cal application



# Medi-Cal: Income eligibility

## Medi-Cal Income Limits

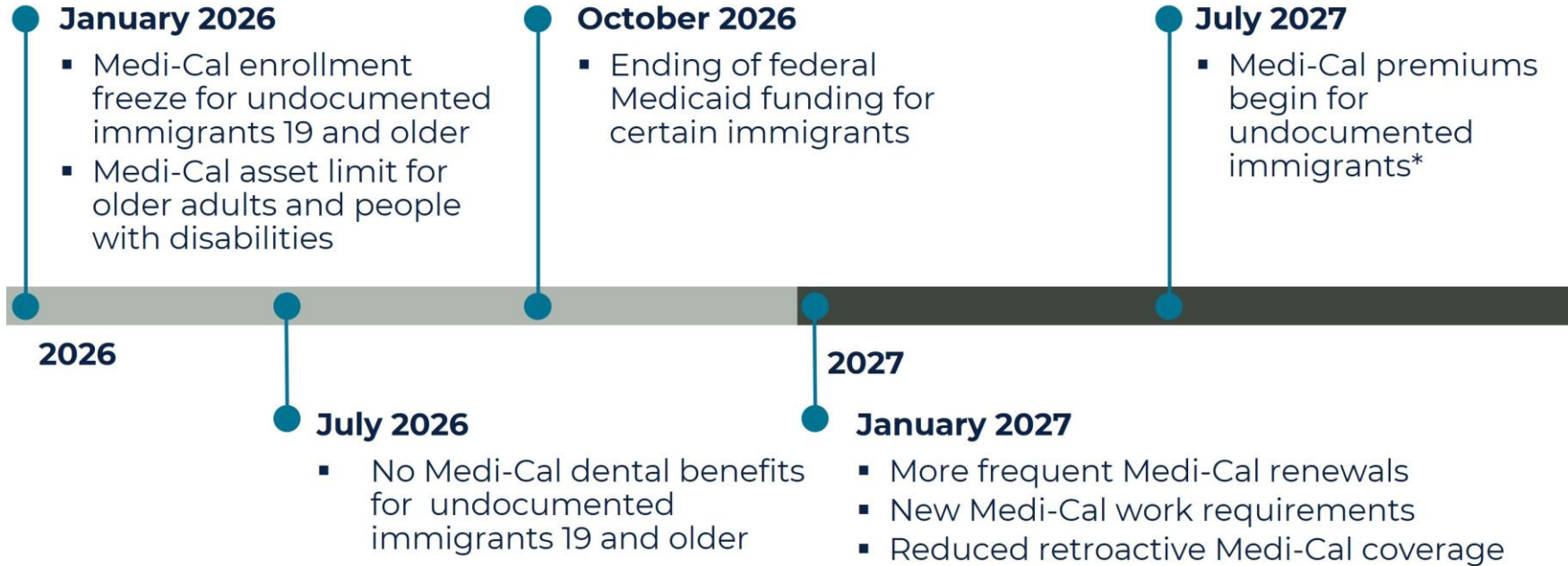
Population	Income Guidelines for Free Medi-Cal (2025)
Single adults 19-64 years old	Maximum \$1,801/month
Adults 65+, visually impaired or with disabilities	Example: Maximum \$2,433/month for a household of 2 people
Children under 19 years old	Example: Maximum \$4,690/month for a household of 2 people
Pregnant persons	Example: Maximum \$2,780/month for a single pregnant person

If your client's income exceeds the income guidelines listed above, they could still qualify for Medi-Cal with a Share of Cost or other Medi-Cal programs.

**Reminder:** Please remind clients to complete the annual renewal to keep their Medi-Cal.



# Upcoming Medi-Cal policy changes due to H.R.1



**Note:** Current and former foster youth who are undocumented are excluded from the state's enrollment freeze and new premiums until they turn 26. Pregnant people are also excluded.



# Medi-Cal: Enrollment restrictions for undocumented immigrants

Effective January 1, 2026

Adults 19 and older with "Unsatisfactory Immigration Status" (UIS)\* are eligible for "restricted coverage" **only** (to cover emergency care).

\*Under state definition, "people with unsatisfactory status" or UIS includes those who are undocumented as well as other small temporary status groups (e.g., student and visitor visas).

See here for more detail:

<https://www.dhcs.ca.gov/Medi-Cal/Pages/immigration-status-categories.aspx>



# Medi-Cal: Enrollment restrictions for undocumented immigrants (continued)

Effective January 1, 2026

- Exemptions:
  - Children under 19
  - Pregnant people
  - Former/foster care youth until they turn 26



# Medi-Cal: Asset limits

Effective January 1, 2026

The asset limit has been reinstated for older adults and people with disabilities:

- \$130K for individuals and \$65k for each additional household member (up to 10).

This change will mainly affect:

- People over 65;
- Individuals with a disability; and
- Nursing home residents

Some resources—such as primary residential home, one car, household items, and some types of savings—don't count.

**Reminder:** The monthly income rules for Medi-Cal have not changed.





# Medi-Cal: More frequent renewals

Effective January 1, 2027

SFHSA must redetermine eligibility **every 6 months** instead of yearly for the "ACA Expansion Group" who are primarily:

- Age 19 to 64 years old, and
- Don't have children younger than age 19
- Not otherwise eligible for Medi-Cal under traditional categories (like disability, pregnancy)

Renewal cycle happens at individual level, so family members may have different renewal dates (e.g., Adults in ACA expansion group renew every 6 months, other family members every 12 months).

- Some can be renewed automatically based on available data, but this option is limited.



# Medi-Cal: Limited immigrant eligibility

Effective October 1, 2026

Ends federal Medicaid funding for certain immigrants including:

- Refugees
- Parolees
- Asylees
- Trafficking victims
- Other noncitizens previously eligible

These individuals will be moved to full-scope Medi-Cal **without dental benefits.**



# Medi-Cal: New work requirements

Effective January 1, 2027

Adults 19-64 years old in the ACA expansion group must also work, attend school, or do community service for at least 80 hours each month; **or** earn monthly income of at least \$580.

- Primary exemptions:
  - Pregnant people
  - Parents with children age 13 or younger
  - People with disabilities/unable to work
  - Former foster youth under age 26
  - People with serious health conditions, including substance use disorders
- Must be verified at application and at each redetermination



# Medi-Cal: Fewer months of coverage for medical bills from before application

Effective January 1, 2027

Right now, Medi-Cal can help pay for health care bills from up to three months before application.

With this change:

- Adults 19-64 in the ACA expansion group will only have coverage for health care bills from one month prior to application,
- All others will have coverage for health care bills from two months prior to the application.





SAN FRANCISCO  
HUMAN SERVICES AGENCY



# Upcoming CalFresh Changes due to State and Federal (H.R.1) Policies

**Phillip Mau, SFHSA, Program Director of Alignment  
and Guidance**



# What is CalFresh?

The federal Supplemental Nutrition Assistance Program (SNAP) provides monthly food benefits for individuals and families with low-income.

Called "CalFresh" in California, this is the largest food assistance program in the state and aims to reduce hunger and improve access to nutritious, affordable food.

CalFresh issues monthly benefits on an Electronic Benefit Transfer (EBT) card, like an ATM card, to purchase food at retail stores and farmers markets that accept EBT cards.

The monthly benefit amount is based on a person's or household's income, expenses, and household size.



# CalFresh

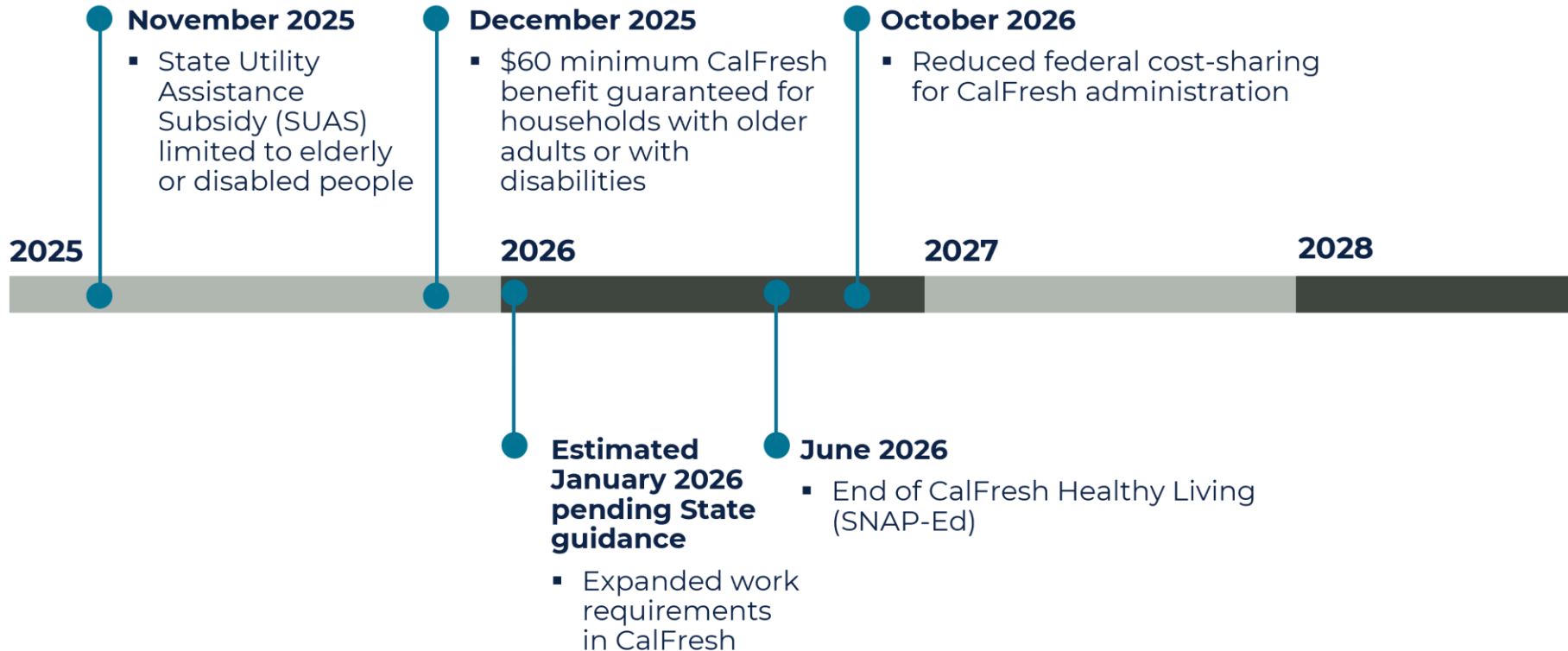
## Benefit Levels and Income Limits (FFY 10/01/25 – 09/30/26)

Household Size	1	2	3	4	5	6	7	8	Each Additional Person
Maximum Benefit Level	\$298	\$546	\$785	\$994	\$1,183	\$1,421	\$1,571	\$1,789	+ \$218
Gross Income (130% FPL)	\$1,696	\$2,292	\$2,888	\$3,483	\$4,079	\$4,675	\$5,271	\$5,867	+ \$596
Gross Income (200% FPL)	\$2,610	\$3,526	\$4,442	\$5,360	\$6,276	\$7,192	\$8,110	\$9,026	+ \$918

**Reminder:** It's always best to apply, as individual circumstances and income exemptions can affect eligibility.



# Upcoming CalFresh changes due to state and federal (H.R.1) policies





# CalFresh expanded work requirements

**Estimated implementation date January 1, 2026 (pending State guidance)**

California's waiver of the CalFresh work requirement has ended. Starting January 1, 2026, many CalFresh recipients are required to meet federal work requirements under newly-expanded definitions.

The work requirements apply to Able-Bodied Adults Without Dependents (ABAWDs) or people who:

- Are adults 18-64
- Can work
- Do not have a child under 14 in the home

If not exempt, starting on January 1, 2026, people subject to these requirements can only get 3 months of benefits in a 3-year period unless they meet certain work requirements or qualify for an exemption.



# CalFresh expanded work requirements (cont)

Estimated implementation date January 1, 2026 (pending State guidance)

## Exemptions remain for anyone who:

- Lives with a child under 14
- Cannot to work due to a physical or mental health condition
- Works 30+ hours/week or earns \$217.50+ per week
- Is in school at least half-time
- Is pregnant
- Has substance abuse disorder or is in treatment
- Receives/applies for Unemployment Insurance
- Cares for an ill or disabled person



# CalFresh expanded work requirements (cont)

Estimated implementation date January 1, 2026 (pending State guidance)

**If not exempt, someone can meet work requirements by doing one or more of the following**

- Working on average 20 hours per week, at least 80 hours per month
- Volunteering or performing community service 20 hours per week, at least 80 hours per month
- Employment training 20 hours per week, at least 80 hours per month
- Participating in workfare arranged by HSA, less than 20 hours per week\*

\*The number of hours required per month is determined by dividing the CalFresh benefit amount by the City's minimum wage.



# CalFresh: Limited immigrant eligibility

## Effective Date TBD\* (CalFresh)

Ends federal SNAP funding for certain immigrants including:

- Refugees
- Asylees
- Trafficking victims
- Other noncitizens previously eligible

The California Food Assistance Program (CFAP) already covers some noncitizens, but the **state legislature needs to decide whether to cover these newly affected groups.**

\*SFHSA is waiting on State guidance on timing, additional information. Visit this page for future updates: [SFHSA.org/BenefitChanges](https://sfhsa.org/BenefitChanges)



# Additional Food Support

- **Neighborhood Food Access Points:**  
Organizations that focus on culturally specific foods and linguistic access.
- **San Francisco-Marin Food Bank Locator:**  
Online tool to locate weekly free groceries, monthly food boxes for seniors, one-time emergency good and more!
- **Summer EBT (SUN Bucks):**  
Provides food benefits to qualifying low-income families with school-aged children when schools are closed. The summer EBT cards are mailed to their homes. Visit their page to learn more ahead of next summer.





SAN FRANCISCO  
HUMAN SERVICES AGENCY

## Jobs + Money



# Helping Clients Apply for Cash Assistance

## CAAP

For single adults or couples  
without dependent  
children

## CalWORKs

For pregnant individuals  
and parents  
with dependent children

- If applying for a cash assistance program, like County Adult Assistance Programs (CAAP aka General Assistance) or CalWORKs, please select only one program.
- Applicants are only eligible for one program. We advise applying only for the one for which you meet the criteria.



# County Adult Assistance Programs (CAAP)

## **Services Offered:**

- Monthly cash benefit of up to \$714
- Referral to employment services
- Referral to counseling and behavioral health services
- Application support for SSI disability benefits
- Shelter and housing access for unhoused clients





# County Adult Assistance Programs (CAAP) (continued)

## **General Eligibility Criteria:**

- Single adults 18-65 years old
- Live in San Francisco (15 consecutive days prior to application)

## **Income & Resource Limit:**

- Maximum \$714 per month (net)
- Assets of up to \$2,000 for an individual; \$3,000 for a couple



# County Adult Assistance Programs (CAAP)

	General Assistance (GA)	Personal Assisted Employment Services (PAES)	Supplemental Security Income Pending (SSIP)
<b>Program Description</b>	Cash aid for low-income adults	Cash stipend and employment and training services to help low-income adults gain and maintain employment with a signed Employment Plan	Cash aid for individuals with medical verification who have a disability that has lasted or will last <b>12 consecutive months or more</b>
<b>Monthly Grant Amount (Housed Client)</b>	\$578	\$714	\$714
<b>Monthly Grant Amount (Homeless Client)</b>	\$59	\$72	\$72
<b>Residency Requirement</b>	<b>15 continuous days in SF</b> prior to the date of application	<b>30 continuous days in SF</b> prior to the date of application	<b>15 continuous days in SF</b> prior to the date of application



# California Work Opportunity and Responsibility to Kids (CalWORKs)

## **Services Offered:**

- Cash aid for families
- CalFresh and Medi-Cal enrollment

## **Wrap-around Support Services:**

- Transportation assistance
- Free diapers
- Subsidized childcare
- Housing assistance
- Home visiting program for first-time parents, families with children under 2 years old
- Behavioral health, substance abuse, and domestic violence services

**Application timeline:** Clients receive a phone call within 7 business days after applying to schedule an interview.



# CalWORKs

## Eligibility Requirements

- Proof of residency (such as a written self-declaration)
- Proof of income/resources & expenses
- Valid ID (temporary waivers available)
- Birth certificates of children (if not on file yet)
- Citizenship or immigration status documentation
- Pregnancy or has minor children
- Social Security number

**Note:** A client does not need to provide documentation at the time of application with the CBO. Once the application is received, SFHSA will follow up with the client to obtain any documents needed.



# CalWORKs

## Income

The family's total income (earned and unearned) must be:

**1) Less than the Minimum Basic Standard of Adequate Care (MBSAC) limit** for their family size

- A standard deduction of \$450 per employed adult is subtracted from each family's total gross earnings. Other deductions apply for unearned income such as child support and disability.

**Reminder:** It's always best to apply, as individual circumstances and income exemptions can affect eligibility.



# CalWORKs (continued)

## Income

The family's total income (earned and unearned) must be:

**2) Less than the Maximum Aid Payment** for their family size

Persons on Aid	1	2	3	4	5	6	7	8	9	10
1) Minimum Basic Standard of Care (MBSAC)	\$930	\$1,526	\$1,892	\$2,244	\$2,561	\$2,880	\$3,166	\$3,445	\$3,738	\$4,056
2) Maximum Aid Payment*										
Non-Exempt	\$734	\$930	\$1,175	\$1,416	\$1,659	\$1,902	\$2,145	\$2,389	\$2,631	\$2,876
Exempt	\$809	\$1,039	\$1,314	\$1,579	\$1,850	\$2,123	\$2,395	\$2,669	\$2,939	\$3,215

**\*Non-Exempt:** Parent considered available for employment; **Exempt:** Parent receives certain disability benefits or family headed by non-needy/non-parent relatives



# Workforce Development: JobsNOW!

## For Job Seekers

- Connects San Francisco benefit program participants with on-the-job training and skill development
- Helps jobseekers train, prepare, and apply for jobs
- Offers career counseling and employment training

## For Employers

- Support with staff training and development, supporting long-term retention and productivity
- Employer wage reimbursement during JobsNOW! training period
- Private and non-profit employers may participate



# Department of Disability and Aging Services (DAS) Benefits and Resources Hub

- DAS programs maximize the well-being, safety, and independence of adults with disabilities, older people, and veterans in San Francisco.
- The DAS Benefits and Resources Hub streamlines access to services throughout the City, including:
  - Food assistance
  - Safety and protection
  - Help with home health care and caregiver support
  - Health programs such as Medi-Cal
  - Help with veterans' benefits
  - Adult learning and activities
  - LGBTQ+ programs for older adults
- **Services available in multiple languages and neighborhoods**
- **[Aging and Disability Resource Centers](#)**





# How to Apply for SFHSA's Benefits and Programs



[BenefitsCal.com](https://www.BenefitsCal.com) or [SFHSA.org](https://www.SFHSA.org)



Medi-Cal/CalFresh  
(855) 355-5757

CalWORKs  
(855) 557-5100

CAAP  
(833) 879-1365

DAS Hub  
(415) 355-6700



- 170 Otis Street
- 1235 Mission Street
- 1440 Harrison Street

- 3120 Mission Street
- 2 Gough Street – DAS Hub



Monday to Friday, 8:00 a.m. to 5:00 p.m.




# How CBO Partners Can Help

- **Stay informed:**
  - [Sign up](#) for the quarterly partner newsletter
  - Bookmark and periodically check:
    - The Community Partner Resources [page](#)
    - Public Benefits Changes [page](#)
- **Help clients apply and recertify to KEEP their benefits**
  - New clients – apply NOW to receive full Medi-Cal coverage (January 1 deadline)
  - Current clients:
    - Complete renewal and reporting forms on time
    - Recertify every six months to KEEP their full Medi-Cal coverage
- **Help connect new and current clients to volunteer and/or work opportunities**



# Community Partner Resources

[View our webpage  
on SFHSA.org](#)

 SAN FRANCISCO  
HUMAN SERVICES AGENCY

Search

Services ▾

About ▾

Contact ▾

Partners ▾

EnglishEspañol中文FilipinoTiếng ViệtРусский

[Home](#) > Community Partner Resources

Community Partner Resources

SFHSA provides educational and outreach materials to help you better serve your community. Our flyers, fact sheets, guides, videos, toolkits, and presentations are available on this page.

You can also receive our **Quarterly Partners Newsletter** about our services' updates and events.

SUBSCRIBE TO NEWSLETTER

Educational and outreach materials

Medi-Cal Program Changes 2026-2027

Request an IHSS Presentation or IHSS Participation at Your Event

3120 Mission Street Service Center

Benefits Promotional Materials



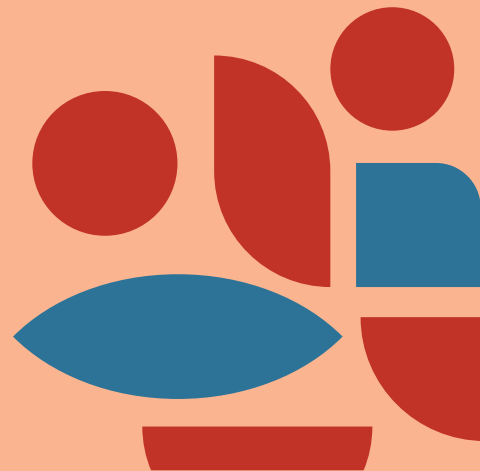


SAN FRANCISCO  
HUMAN SERVICES AGENCY



# Legal Update on Immigrants and Public Benefits

**Ariel Brown, Senior Staff Attorney  
Immigrant Legal Resource Center (ILRC)**



# Immigrants should get the help they need!

- “Public Charge” rules do not change **who is eligible** for public benefits
- Public Charge rule only impacts those applying for their green card through a family petition or an employer petition or entering the U.S. :
  - U.S. citizens can use any benefit without fear.
  - Permanent residents, asylees, refugees, people with U visas, T visas, VAWA, many others can use all programs they qualify for.
  - It is okay for family members of immigrants to get benefits, including citizen children.
  - There is no public charge test to become a citizen! You can use benefits and apply for citizenship.



# Immigrants should get the help they need! (continued)

- So far, there have been no changes to public charge by the current federal administration
- Most benefits are safe to use!
- General rule: if you qualify, you can use it



# Public Charge

## **Health, nutrition, and housing programs are safe to use for everyone**

- If you are applying for a green card or entry into the U.S. and are subject to a public charge test, the only programs immigration officers will consider are:
  - Cash aid for income maintenance programs, such as CalWORKs, CAAP, and SSI
  - Institutional long-term care paid for by the government



## Public Charge (continued)

- Utilizing public benefits, including cash assistance and long-term care, are not considered public charge for many types of immigrants.
- U and T visa holders, permanent residents, U.S. citizens, refugees, asylees and many more are eligible for benefits and do not face “public charge”.

### **Free legal advice is available:**

- Bay Area Legal Aid’s Legal Advice Line: (800) 551-5554
- [Immigrants.sfgov.org](https://immigrants.sfgov.org)





# What about my sponsor?

- Using benefits does NOT hurt your sponsor in California.
- California does not have a system to require sponsors to “pay back” benefits used by a person that was sponsored.
- A sponsor’s income can be factored into an immigrant’s income eligibility to receive certain public benefits. This is called “deeming.” It may mean that a sponsored immigrant does not qualify for a program because they are over-income.



# Immigrant Rights and Resources in San Francisco

Local policies, resources,  
and programs for all immigrants



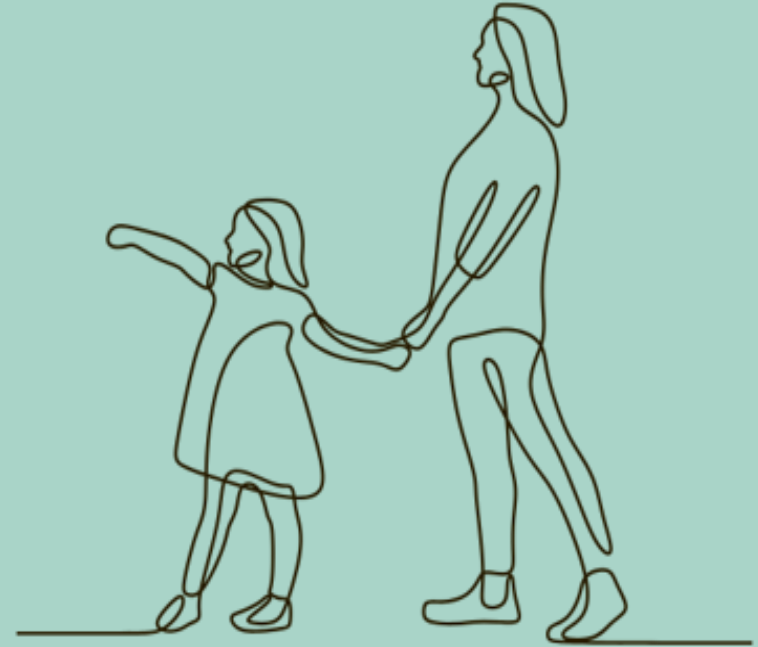
# About OCEIA

**The Office of Civic Engagement & Immigrant Affairs (OCEIA) is a policy, compliance, direct services and grantmaking City department.**

OCEIA's mission is to promote inclusive policies and foster immigrant assistance programs that lead to full civic, economic and linguistic integration.



# Local Resources for Immigrants



# Local Laws and Supports for Immigrants in SF

- Sanctuary City Ordinance (1989)
  - Due Process Ordinance (2013)
- Immigrant Rights Commission (1997)
- Language Access Ordinance (2001)

# Sanctuary City in Practice

Under the **City & County of Refuge Ordinance, *aka the Sanctuary City Ordinance***, City employees cannot use City funds or resources, including their work time or any information learned in the course and scope of their employment, to aid federal law enforcement with enforcement of civil immigration law, except in very limited circumstances.

# San Francisco Rapid Response Network

**SF's 24-hour Rapid Response hotline: (415) 200-1548**

**Call the hotline to get help with:**

- Emergency **legal help** for someone detained by ICE
- Requests for immigration court and ICE check-in **accompaniment**
- Requests for urgent and non-urgent **legal consultations**
- To report observed immigration enforcement activity in San Francisco

**Save the number in your phone to call when needed.** The Rapid Response hotline usually has just one person answering the phone. So if the line is busy, please call back. Help is available in multiple languages.

The SF Rapid Response Network is run by a group of community non-profit organizations from SFILN and SFILDC. Learn more: [sfilen.org/resources/sf-rapid-response-network](https://sfilen.org/resources/sf-rapid-response-network)

**[Find Regional Rapid Response Networks](#)**

# Know Your Rights Trainings and Resources

The [San Francisco Immigrant Legal & Education Network \(SFILEN\)](#) partners with schools, City agencies, community centers, and grassroots organizations to offer rights-based education to immigrant communities throughout San Francisco.

SFILEN provides trainings on the following topics:

- Know Your Rights
- Rapid Response
- Emergency Family Plan
- *and more*

To request a training or presentation, email [sfilenetwork@gmail.com](mailto:sfilenetwork@gmail.com), or complete the application to request a workshop for your organization available on their website: [sfilen.org/about/our-network-2/request-a-workshop](https://sfilen.org/about/our-network-2/request-a-workshop)



# Know Your Rights Resources (continued)

The [Immigrant Legal Resource Center](#) has a variety of materials to educate the community and prepare individuals for possible encounters with immigration authorities.

**For more information about their materials and resources on community rights and how to prepare in case of emergencies, visit:**

- Printable [red cards](#) in eight languages for community members
- A [know-your-rights handout](#) in **eight languages** to help families prepare for a possible interaction with ICE
- A [train-the-trainer toolkit](#) on holding a Know-Your-Rights presentation in your community

# SF Immigrant Forum Website

Resource website: [sf.gov/immigrants](https://sf.gov/immigrants)

**The SF Immigrant Forum website provides information on low-barrier resources available to immigrants, asylees, and refugees in San Francisco.**

## Resources include:

- Immigration legal support
- Health
- Housing and shelter
- Food
- Know your rights
- Financial and cash assistance
- Identification
- English language learning
- Child care and family
- Economic and workforce development
- Transportation
- State and regional resources
- and more!*

# SF Immigrant Forum Meetings

## Bi-monthly online webinars

The SF Immigrant Forum meetings are topic-based convenings for service providers to connect with City departments and community organizations on relevant resources and information for immigrant communities.

### Last meeting:

In September, the SF Immigrant Forum covered updates from the SF Rapid Response Network and Know Your Rights information.

Watch the recorded meeting:  
[https://bit.ly/sfimmforum\\_9-24-25](https://bit.ly/sfimmforum_9-24-25)

### Next meeting:

Wednesday, December 3, 2025  
from 2:30 - 4:00 p.m.

Register: [sf.gov/immigrants](https://sf.gov/immigrants)

# San Francisco Immigrant Support Hub

**Find free to low-cost immigration legal help in San Francisco: [immigrants.sf.gov](https://immigrants.sf.gov)**

**The organizations listed on this website can help immigrants find immigration legal help.**

- Consultations are generally low-cost or free and the application cost may be covered for San Franciscans
- Filter by immigration type and language need
- Rapid Response Hotline information available
- Full site is available to use in English, Spanish, Chinese and Filipino

# Regular Immigration Workshops in SF

## Free Citizenship Workshops

The **San Francisco Pathways to Citizenship Initiative** hosts free, regular workshops that assist eligible immigrant green card holders with their naturalization application.

Workshops occur in various locations across San Francisco every 2-4 months. Support is available in multiple languages, and help with the low-income fee waiver is also provided.

**For information on upcoming workshops, visit: [sfcitizenship.org](https://sfcitizenship.org)**

## Free Work Permit Clinics

OCEIA hosts free Work Permit Application Clinics with support from community partners. These clinics support **Asylum Seekers** apply for their Employment Authorization Document (EAD).

**For information on upcoming workshops, visit: [sf.gov/oceia](https://sf.gov/oceia)**

# Immigration Fee Assistance

## Mission Asset Fund

**Get a zero-interest loan to pay your USCIS immigration application fee.**

Available for the following immigration petitions:

- DACA
- Citizenship
- Green Card
- Temporary Protected Status (TPS)
- Family Petitions
- Advance Parole
- Employment Authorization (EAD)

Benefits of Loan Participation:

- Build credit history
- Self-paced online financial education

Learn more: [missionassetfund.org/immigration-programs](https://missionassetfund.org/immigration-programs)

# Stay Connected:

## Questions?

Email [civic.engagement@sfgov.org](mailto:civic.engagement@sfgov.org)

Call OCEIA at **415-554-0600**

## Follow us on social media:

**Instagram:** @sf\_immigrants

**Facebook:** @sfgov.oceia

**X/Twitter:** @OCEIA\_SF

**Bluesky:** @oceiasf.bsky.social

**Website:** [sf.gov/oceia](https://sf.gov/oceia)





SAN FRANCISCO  
HUMAN SERVICES AGENCY

## Contact SFHSA



**General Information: (415) 557-5000**

**SFHSA Service Contact Info:**

**[SFHSA.org/Contact](https://www.sfhsa.org/Contact)**

**Follow us on social** for the latest service updates: **@SFHumanServices**



## Questions?







SAN FRANCISCO  
HUMAN SERVICES AGENCY

# Appendix



# CalFresh Eligibility at a glance

Who May Be Eligible	Immigration Status	Income/Household Guidelines *	Type of Benefit
Single adults 18+	Citizens, students, permanent residents, refugees, asylum seekers	Example: Maximum \$2,610/month	EBT Card
Single adults 18+	Undocumented	Not eligible	
Families	Citizens, permanent residents, refugees, asylum seekers	Example: Maximum \$4,442/month for a family of three	EBT card, amount based on household size
Families	Undocumented	Not eligible – but parents can apply on behalf of US-born children	

**Note:** In addition to income, the benefit amount is based on household size. Expenses such as utility bills and child support payments may be considered.



# CalFresh: Other federal changes

Effective Date	Change
<b>November 1, 2025</b>	State Utility Assistance Subsidy (SUAS) and the automatic standard utility allowance (SUA) limited to elderly/disabled households. All others must have direct utility costs to deduct from income. Will be rolled out throughout the year for existing cases.
<b>June 30, 2026</b>	End of CalFresh Healthy Living Program.
<b>October 1, 2026</b>	Federal funding to support CalFresh administrative costs (systems, staff, overhead, etc.) will reduce from 50% to 25%.
<b>October 1, 2027</b>	California must pay a percentage of CalFresh benefits on a sliding scale if the Payment Error Rate (PER) from three years prior is at or above 6%.
<b>October 1, 2027</b>	Cost neutrality required for CalFresh allotment increases.



# CalWORKs eligibility at a glance

Who May Be Eligible	Immigration Status	Income/Resource Guidelines	Type of Benefit
Single adults	Citizens, permanent residents, refugees, asylees	Not eligible	Not eligible
Single adults	Undocumented	Not eligible	Not eligible
Families with children	Citizens, permanent residents, refugees, asylum seekers	<p>Example: Maximum \$1,829/mo for a family of three</p> <p>Example: Maximum \$12,137 in resources (or \$18,206 if a senior or person with disabilities in the family)</p>	CalWORKs
Parents	Undocumented	Not eligible unless catastrophically ill – but can apply on behalf of US-born children	CalWORKs
Pregnant persons: 1st through 3rd trimester	Citizens, permanent residents, refugees, asylum seekers	Same guidelines as families with children	CalWORKs



# JobsNOW! eligibility at a glance

Household	Eligibility	Guidelines
Single adults	Authorized to work in the U.S., 18 years of age or older.	Automatically eligible if enrolled in: CalFresh, CalWORKs, or CAAP
Single adults	Undocumented	Not eligible
Families with children	Authorized to work in the U.S., 18 years of age or older.	Enrolled in: CalFresh, CalWORKs, or CAAP
Families with children	Undocumented	Not eligible – but can participate in income generation program

